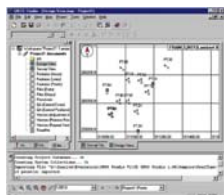


Product News

Survey / GIS

Document: MKG06-009

21 August 2006



RINEX Converter

Product concerned

Product Names:

GNSS Solutions

Product Family:

Survey / GIS

1. PROBLEM / ANOMALY

It has been reported some anomalies when converting Z-Max.Net raw data files to RINEX: the resulting file might only include L1 raw data, no L2 data.

Z-Max.Net raw data includes extra data that might mislead the current RINEX Converter.

2. SOLUTION

A new version of the RINEX Converter has been issued and is available on [ftp.thalesnavigation.com](ftp://ftp.thalesnavigation.com)

- Rinex2.exe Version 2.83 dated 31 July 2006
- rinexdll.dll Version 2.83 dated 31 July 2006

Copy those 2 files into the GNSS Solutions\Bin directory (usually on C:\Program files\).

3. CUSTOMER NOTIFICATION

All RSMs will receive this Product Marketing Update for information of their channels / customers.